

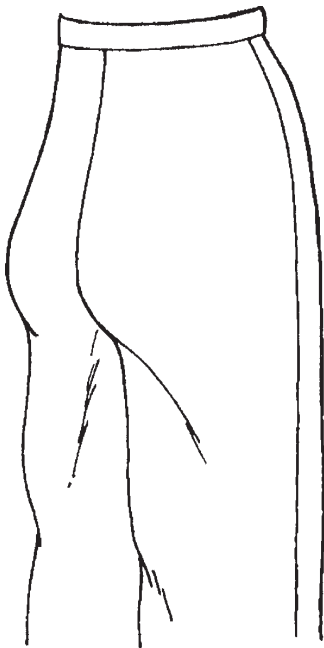
BUYING THE CORRECT SLACKS SIZE

The average hipline measurement in the United States is 40". The corresponding pattern size, according to the pattern envelope, is a size 16. The **Sew/Fit Method** doesn't suggest you buy a size 16, but rather a size 12 or even a 10 – two to three sizes smaller. If the thighs are very small in relation to the hipline, buy the pattern four sizes smaller.

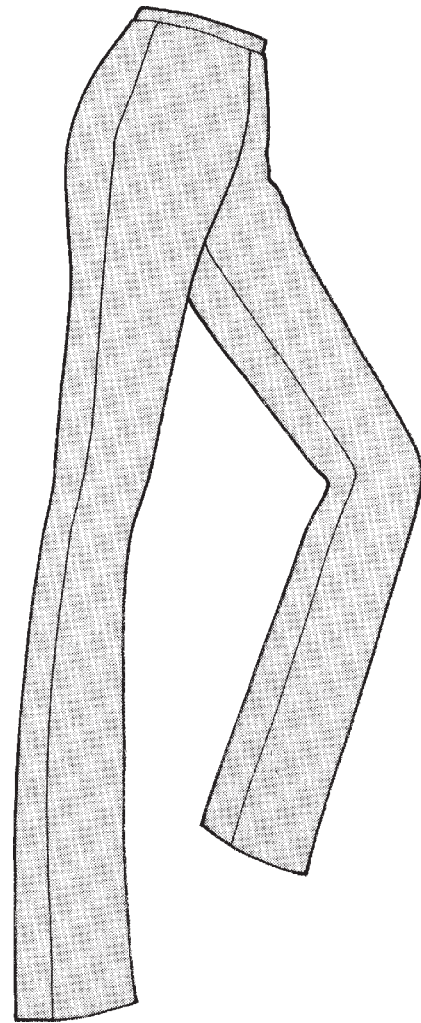
STANDARD BODY MEASUREMENTS	Waist	24	25	26½	28	30	32	34	Ins.
	Hip-9" below waist	33½	34½	36	38	40	42	44	"
Fabric required	Sizes	8	10	12	14	16	18	20	



Sew/Fit suggests you buy your slacks pattern two to three times smaller than your hipline measurement.



If you buy a slacks pattern two to three sizes smaller than your hip measurement, they will fit better in the thighs and seat.



Buying a Smaller Size Pattern

Slacks look and fit better when a pattern two to three sizes smaller is bought and adjusted to fit the figure measurements. ***It is much easier to make a pattern larger than smaller.*** When patterns are bought to fit the hip measurement, the back thigh area is usually too large. If the slacks are altered, wrinkles will appear and they will always bag in the seat.

By purchasing a pattern two to three sizes smaller than your hipline measurement, the slacks will fit properly through the thigh area. The measurement of the thigh on the pattern should ***be equal to or smaller*** than your measurement.



SEW/FIT SLACKS MEASUREMENT CHART

Hipline Measurement	Misses'	Misses' Petite	Junior	Junior Petite	Half-Size	Women's
36"	6	6	5	5		
38"	8	8	7	7		
40"	10	10	9	9		
42"	12	12	11	11	12 ¹ / ₂	
44"	14	14	13	13	14 ¹ / ₂	
46"	16	16	15	15	16 ¹ / ₂	
48"	18	18			18 ¹ / ₂	38
50" and over	20	20			20 ¹ / ₂	40

The sizes given are according to the Sew/Fit fitting method. Pattern company charts will differ.

SELECTING A SLACKS STYLE THAT FLATTERS YOUR FIGURE

Most people are comfortable with or have certain styles that they know are best suited for their figures. But, when purchasing a slacks pattern, there are certain pattern details that are not well-known and should be explained. This section will briefly explain the different styles of slacks, and why they are best suited for specific figures.

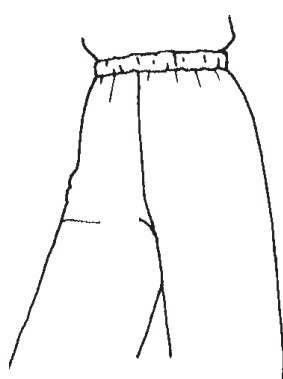
Waistbands

ELASTIC WAISTBAND—or a turned-under waistband, is best suited for a larger figure or figure with a rounded stomach. An elastic waistband has a casing with elastic inserted in it. For best results, use non-roll elastic.

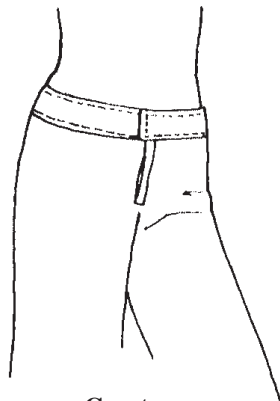
CONTOUR WAISTBAND – a contour waistband is a good style for a figure that has large hips and thighs and a small waistline. A waistband is attached below the high hip area and fits the curve of the figure and the fabric.

FACED WAISTBAND – a faced waistband is a good style on a figure that has a high hipline. A facing is attached at the waistline and can be a self-fabric facing or a grosgrain ribbon facing.

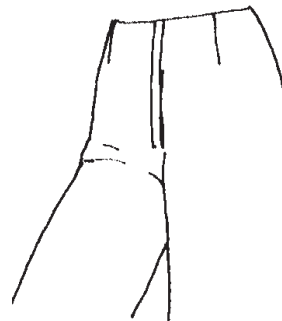
FITTED WAISTBAND – a fitted waistband is the most common waistline finish, and is a good style for all average figures. This band is cut on the straight of grain at least 1¹/₄" wide, but can vary for comfort and style and also according to your height.



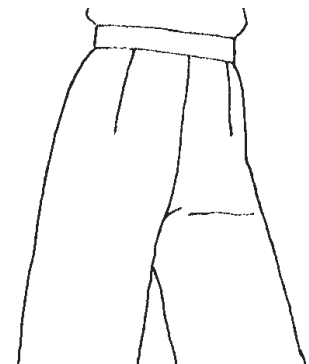
Elastic



Contour



Faced



Fitted

Darts

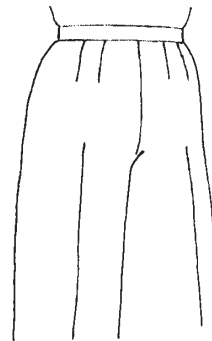
Darts can be changed and styled according to your figure:

1. For a straight, average figure, use one dart in each front and back panel.
2. For a figure with a rounded stomach, eliminate the darts.
3. For a fuller figure with larger thighs and hips, use two darts in the front and back panels.
4. For a figure with over a 12" difference between the hips and waist, use three darts in each front and back panel.

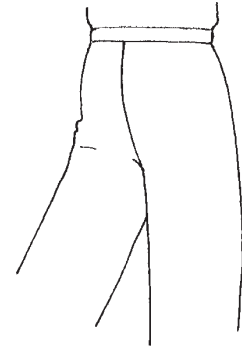
Straight, Average Figure



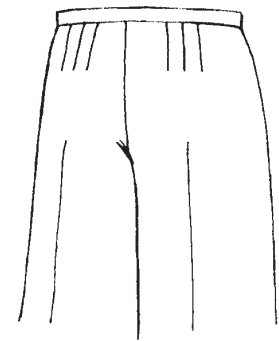
Fuller Figure



Rounded Stomach



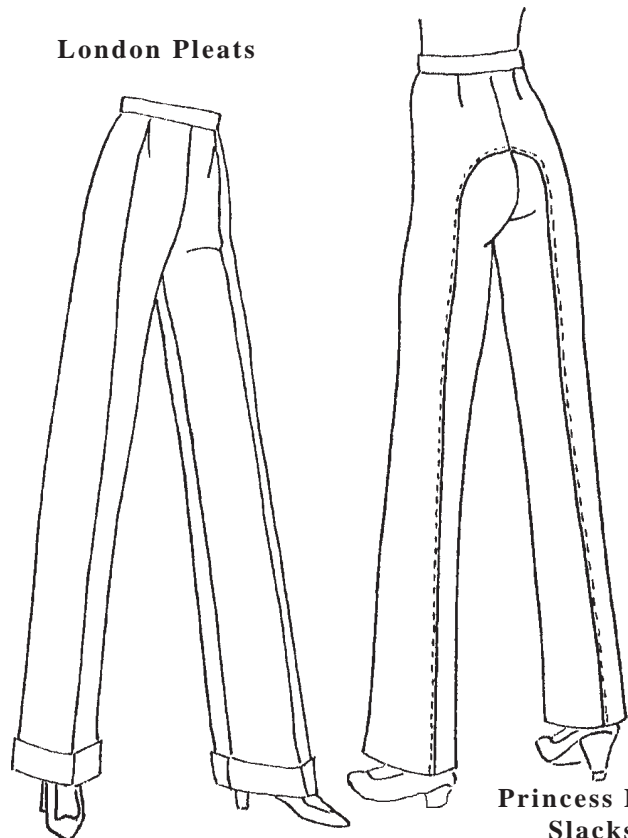
Large Difference Between Hips and Waist



London Pleats

London pleats should only be used on very tall, narrow figures. Short, fuller figures will look shorter and heavier with pleats instead of darts.

London Pleats



Princess Line Slacks

Princess Line Slacks

Princess line slacks have three or four main pattern pieces, instead of the common two pieces.

The princess slacks style is especially good for petite figures because all of the seams make it easy to down size the pattern. The princess slacks pattern is also a good style for youthful figures.