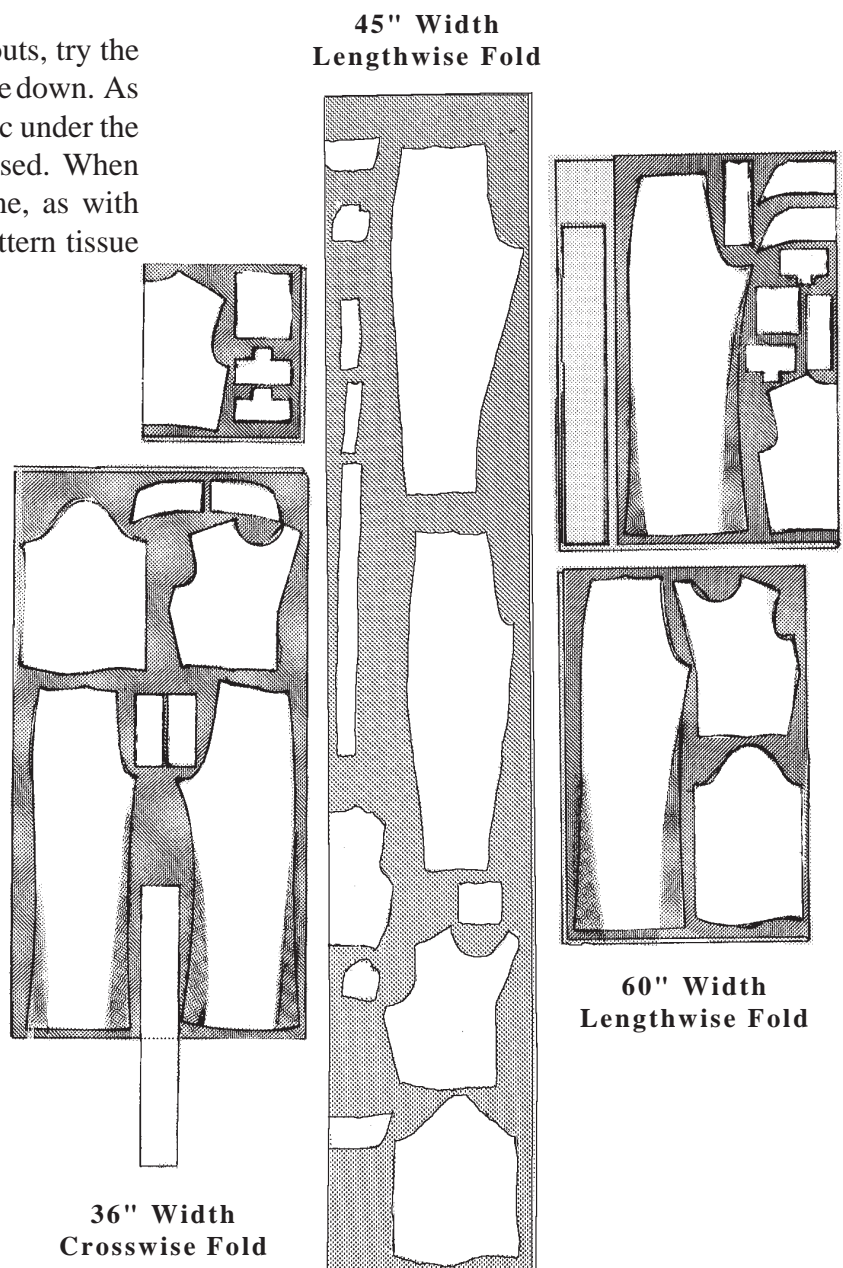


PATTERN LAYOUT

Make a *rough layout* of the pattern pieces on the fabric using the instructions in the pattern layout guide on the back of the pattern envelope. Study the placement of the pattern pieces for your particular width of fabric (36", 45", or 54"-60"). Measure for your grainline and place grainline pins in your fabric. Move the tissue pieces around, up and down the grainline, until you are satisfied with the layout. You will save time and avoid mistakes if you place the patterns correctly before pinning.

While experimenting with different layouts, try the pattern pieces both right side up and upside down. As long as there are two thicknesses of fabric under the pattern, either side of the pattern can be used. When cutting out one layer of fabric at a time, as with uneven plaids, be sure to reverse the pattern tissue before cutting the second piece.



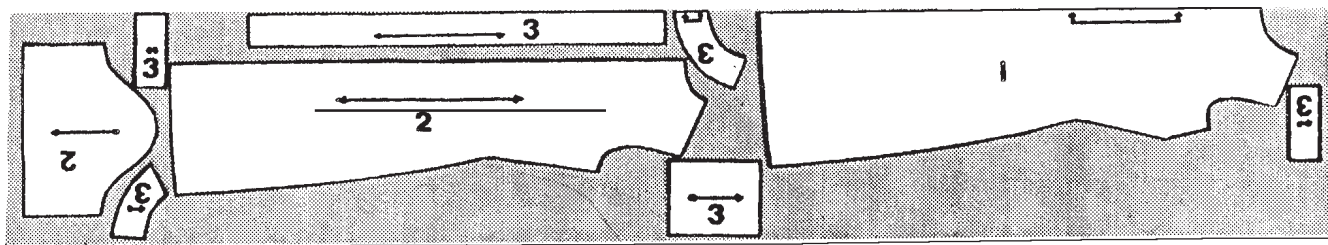
Basic Layout

If you don't have a layout guide, you can lay out the pattern on the fabric by following these steps:

1. Place the large pieces to be cut on the fold.

2. Place the large pieces on the selvage if they are to be cut on the selvage.

3. Place the small pieces in the remaining open spaces.

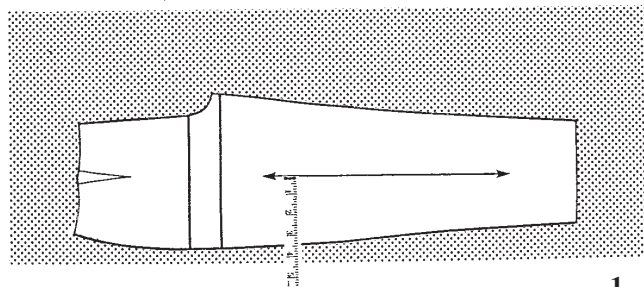


Putting the Fabric on Grain

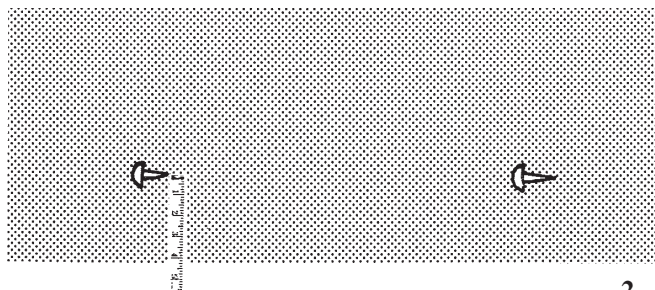
Using a rough layout, place all the pattern pieces to be used on the fabric.

1. With each pattern piece, measure the distance from the fold to the grainline arrow where you would like the pattern to be placed.
2. Remove the pattern piece and place a pin in the fabric. Place another pin the same distance from the fold, about 6" to 10" from the first pin (the longer the arrow on the pattern piece, the greater distance there can be between the grainline pins).
3. Place the pattern back on the fabric, matching the grainline pins with the grainline arrows.
4. Continue to put each pattern piece on grain using these steps.

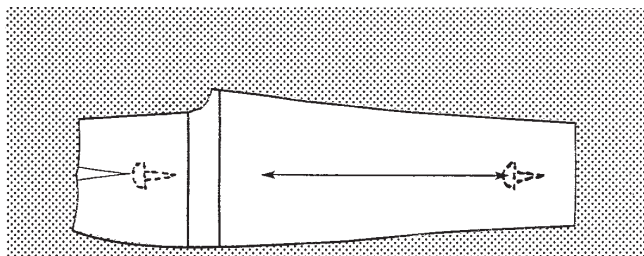
By putting the pattern pieces on grain with grainline pins in the fabric, the pattern can be moved up or down on the length of the fabric, taken off, or put back on the fabric without unpinning or re-measuring for the grainline.



1



2



3